

# Rennsteig Werkzeuge GmbH

## *Crimping Systems*

Crimping tool 8.75-6 (Digi) with indenters according to M22520/1-01 (AF8) or 8.75-8 (Selector)



Crimping tool 8.73-6 (Digi) with indenters according to M22520/2-01 (AFM8) or 8.73-8 (Selector)



Crimping tool 8.72-6 (Digi) with indenters according to M22520/7-01 (MH860) or 8.72-8 (Selector)



All shown RWZ- tools can replace the three existing MIL- tools by using the original MIL- positioners or alternatively the positioners of RWZ.

# Rennsteig Werkzeuge GmbH

## *4/8 Indent SelectorCrimp Tool*

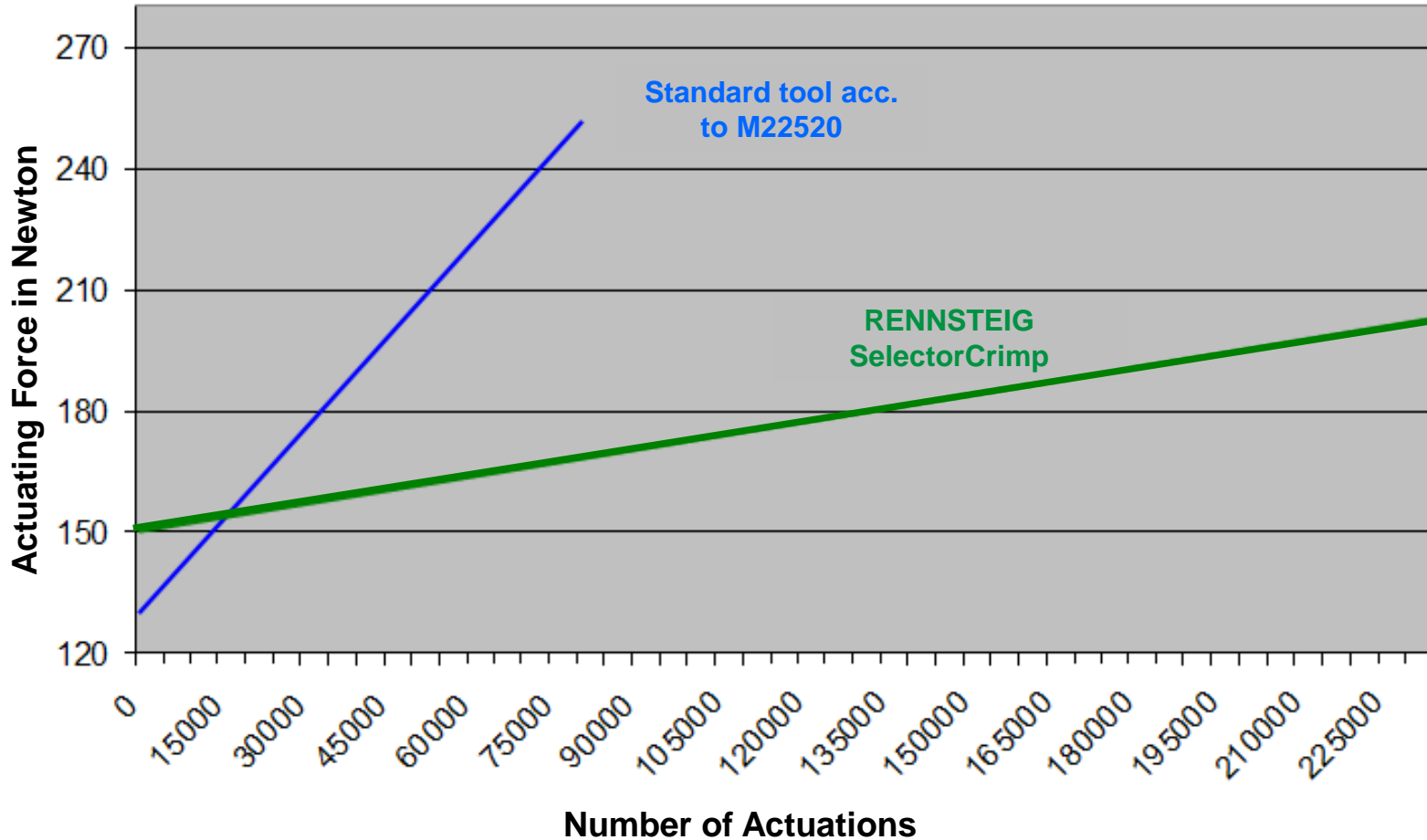


- Higher wear resistance...
- longer service life...
- lower actuating force...
- ergonomic handles...
- smooth operating process...

... when compared with selector tools usually found in the market

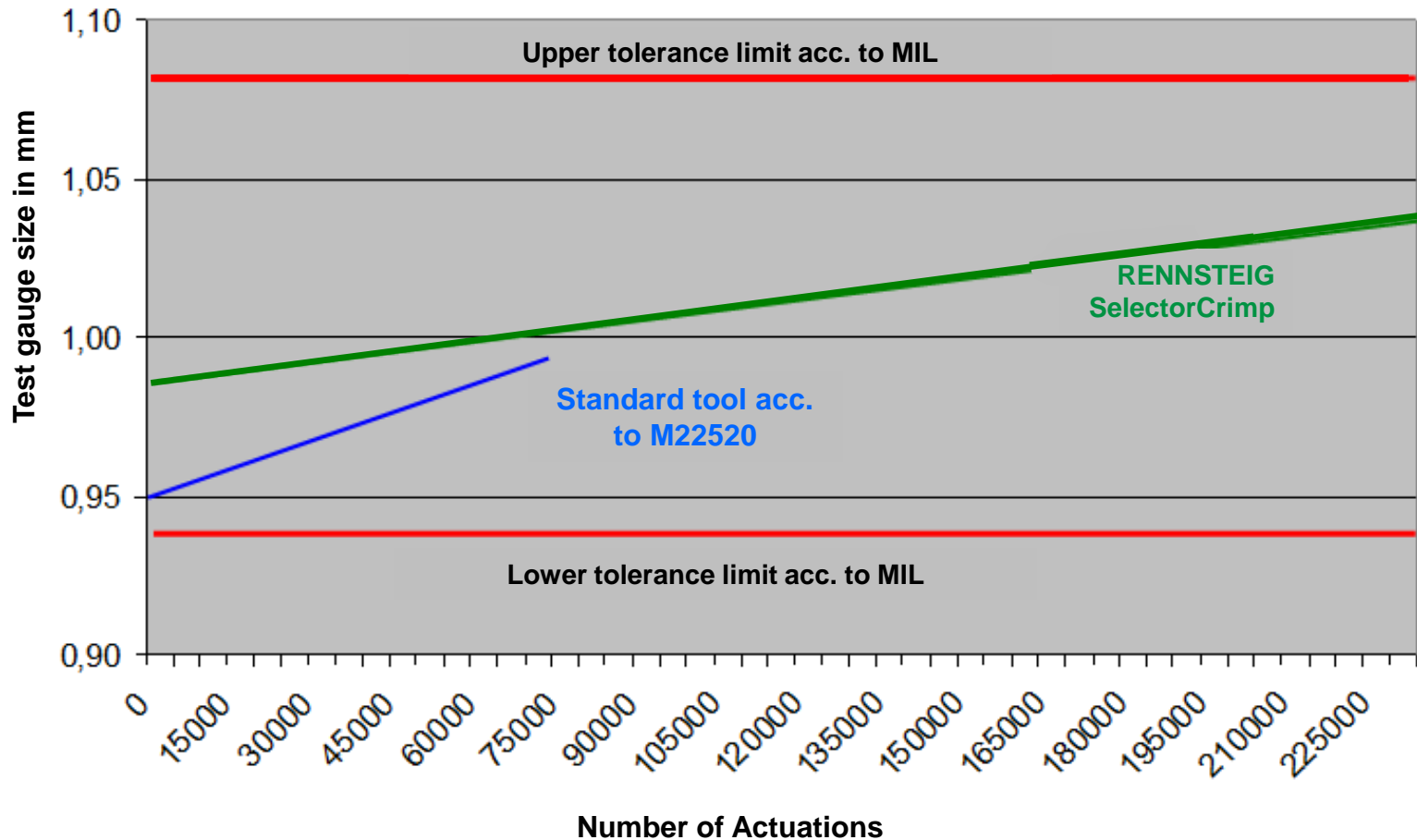
# Rennsteig Werkzeuge GmbH

## *Progress of Actuating Force*



# Rennsteig Werkzeuge GmbH

## Wear Behavior



Values derived with tool 8728 0000 6 and a standard competitor tool, which failed after 74.000 crimp cycles.

# Rennsteig Werkzeuge GmbH

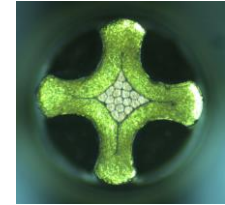
## 4/8 Indent DigiCrimp Crimp Tool



- Continuous adjustment of crimping depth
- Wear monitoring
- Wear forecasting function
- Recalibration function
- Display shows remaining operational life
- Various modes to select from (mm / inch / MIL- Selector settings)

# Rennsteig Werkzeuge GmbH


## DigiCrimp



### DigiCrimp saves you time and money

- Recalibration by user whenever needed
- Fast and easy
- No need for extra spare tools
- Wear forecast function lets you plan ahead (Display of residual life time)

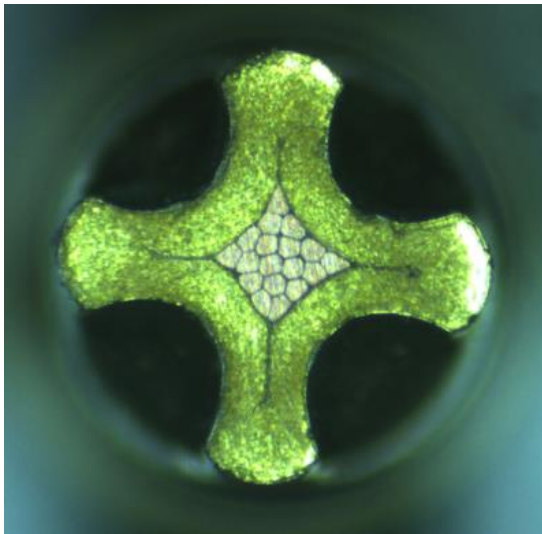


Art. No.	Finish	Profile	Capacity		Length mm	Weight g	Corr.
			mm <sup>2</sup>	AWG			
8726 0000 61	Tool with MIL-indents in plastic case (without locator)		0,08 - 2,5	28 - 13	175	820	M22520/7-01
8736 0000 61			0,03 - 0,5	32 - 20	175	820	M22520/2-01
8756 0000 61			0,14 - 6,0	26 - 10	230	1190	M22520/1-01

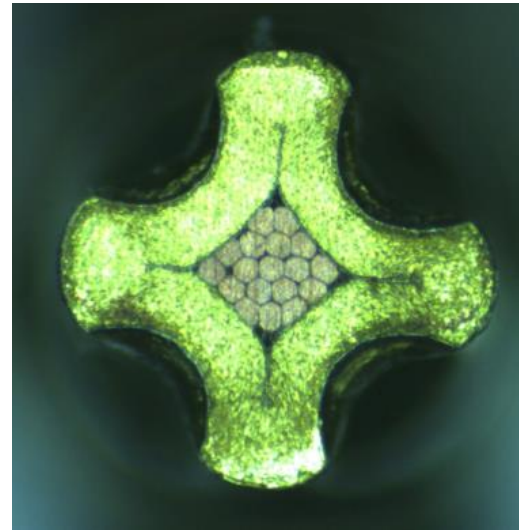
# Rennsteig Werkzeuge GmbH

*Crimp precision in 1/100 mm*

<b>Selector setting 1 (.16 - .021)</b>														Selektor	Standard selector tool acc. to M22520/7-01
.016			.017		.018			.019		.020			Inch		
0,41	0,42	0,43	0,44	0,45	0,46	0,47	0,48	0,49	0,50	0,51	0,52	0,53		mm	



Lower limit at selector position 4 of crimping tool acc. to M22520/7-01



Upper limit at selector position 4 of crimping tool acc. to M22520/7-01

# Rennsteig Werkzeuge GmbH

*Precision is achieved through compensation resulting from wear of the tool*

